

NOTES: REFER TO FLOOR PLAN C-1 FOR INTERPRETATION NOT SHOWN.

LOWER LEVEL  
C-2 UNIT 201

UPPER LEVEL  
C-2 UNITS 206, 207  
C-2 REVERSE UNITS 209, 210

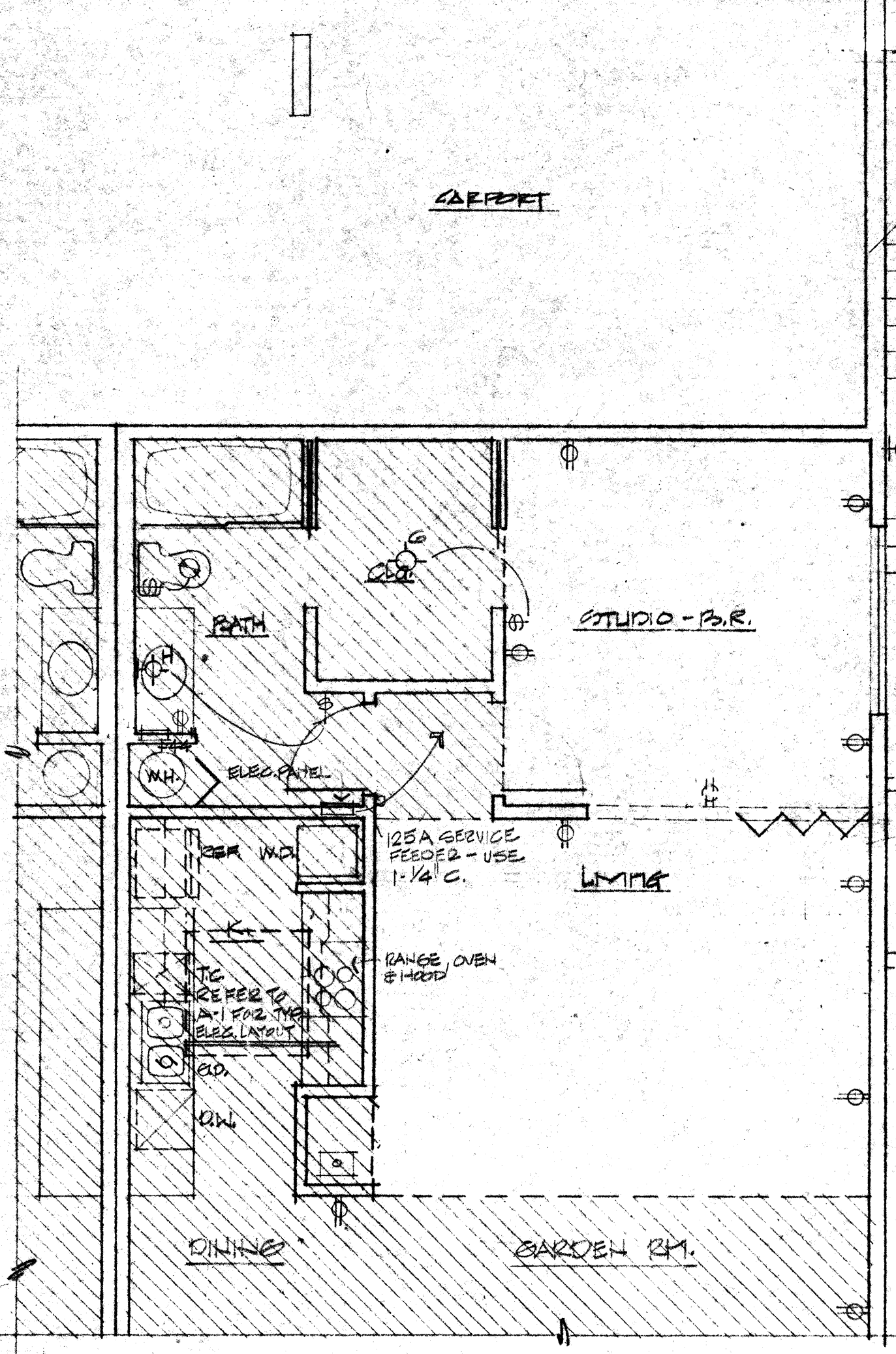
UPPER LEVEL  
C-1 UNITS 202, 204  
205, 205, 205, 205  
C-1 REVERSE UNITS 205, 205, 209  
222, 222

LOWER LEVEL  
C-1 UNITS 202, 204, 206, 207  
208, 208, 208, 208  
C-1 REVERSE UNITS 203, 205, 209  
210, 210, 220, 222

ELECTRICAL SYMBOLS & FIXTURES

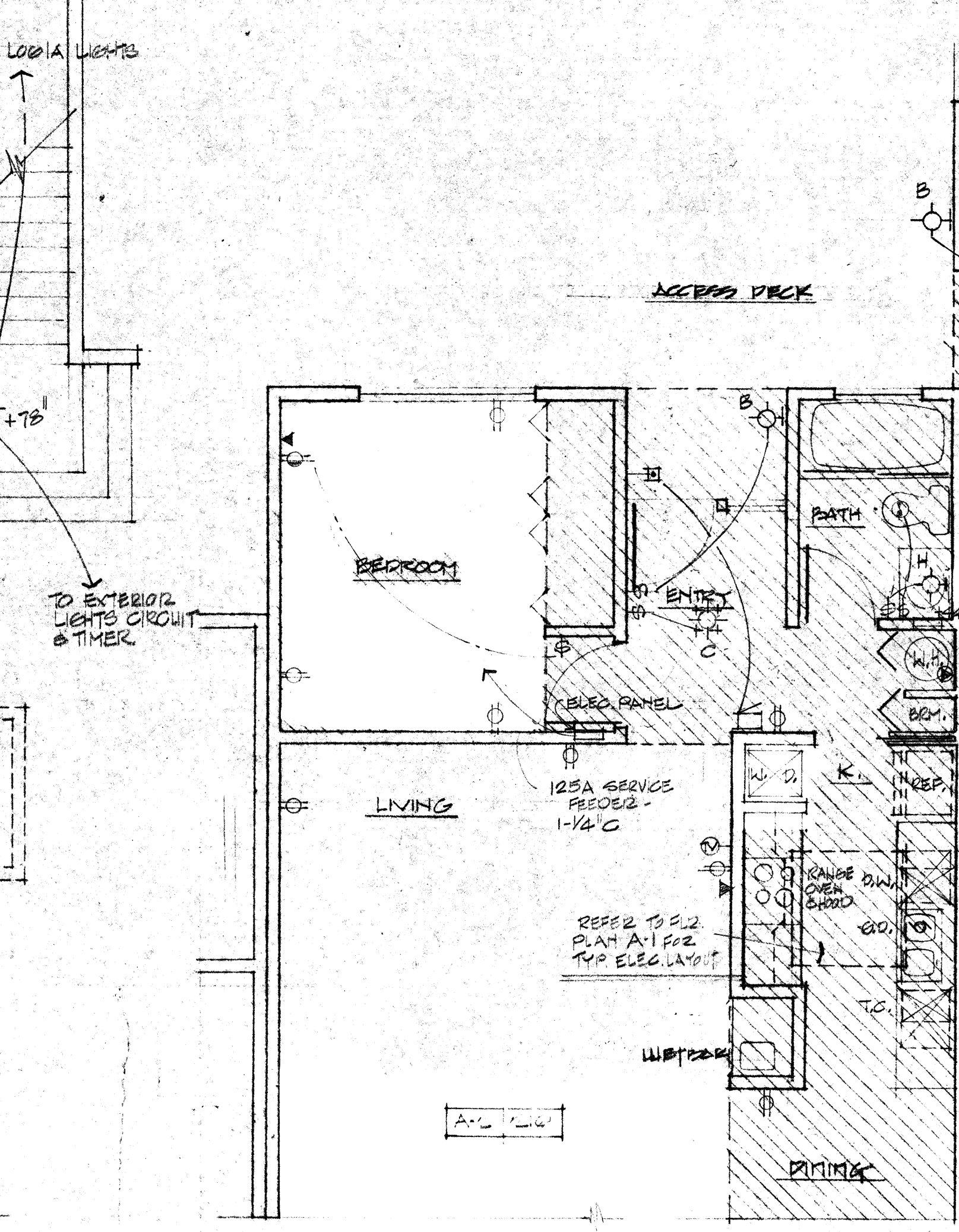
- SW - SWITCH @ +30" UNLESS OTHERWISE NOTED
- SW - 3-WAY SWITCH
- SW - DIMMER SWITCH
- FL - FLUORESCENT FIXTURE
- CI - CEILING INCANDESCENT
- WE - WALL EXCISEL
- PE - PENDANT
- RI - RECESSED INCANDESCENT
- PC - PULL CHAIN
- RS - RECESSED STEP LIGHT
- WR - WALL RECEPTACLE @ +15" UNLESS NOTED OTHERWISE
- WS - WALL RECEPTACLE - 1/2" SWITCHED
- JB - JUNCTION BOX FOR EQUIPMENT CONNECTION HEIGHT AS REQUIRED
- PE - PUSH BUTTON
- CC - CODE CHIME
- MO - MOTOR
- EF - EXHAUST FAN
- TL - TELEPHONE REWIRE LOCATION
- TA - TELEVISION ANTENNA
- WP - WATERPROOF - P-15 1/4" @ 15" UP

NO.	MFR & NO.	TYPE	LAMP	REMARKS
A	LIGHTOLIER 5550-5557	1-100W	1-100W	PENDANT
B	LIGHTOLIER 5101	SURFACE	1-60W/150W	ENTRY LIGHT
C	HALO 114-92	RECESSED	1-40W	DOWNLIGHT
D	HALO 114-92	RECESSED	1-40W	WALL WASHER
E	HALO 114-204	RECESSED	1-75W	DOWNLIGHT
F	HALO 114-201	RECESSED	1-60W	DOWNLIGHT
G	STAFF 7002	SURFACE	1-100W	
H	STAFF 2002	SURFACE	2-60W	
I	STAFF 7401	SURFACE	1-40W	
J	PORCELANIT DEVICE	SURFACE	1-75W	PULL CHAIN
K	LUM. CEILING 14040	RECESSED	2-TUBES	2-40W FIXTURES
L	HALO 114-200	SURFACE	1-TUBE	DOWN LIGHT



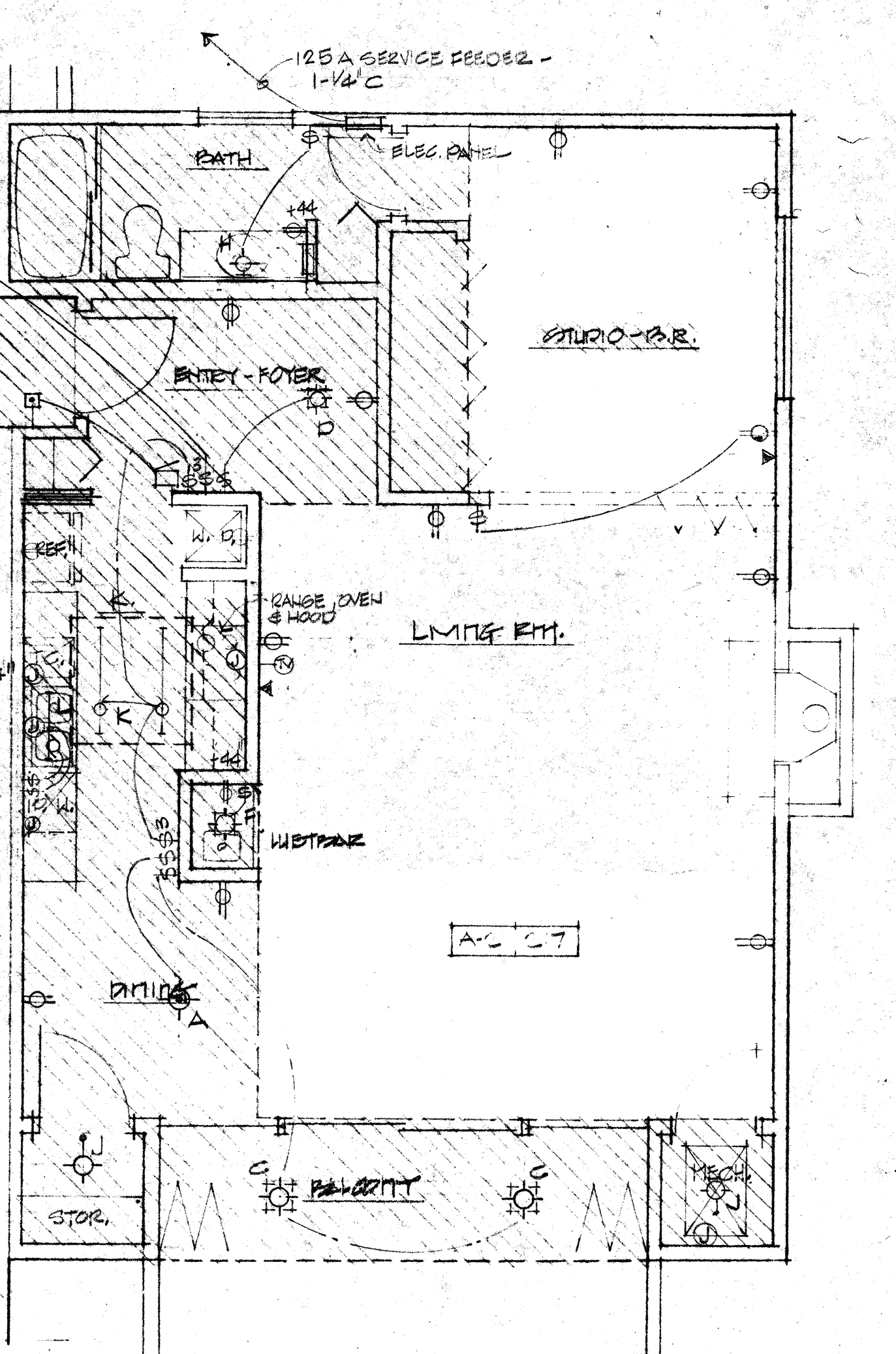
NOTES: REFER TO FLOOR PLAN A-1 FOR INTERPRETATION NOT SHOWN.

A-3 UNITS 102, 104, 110, 121, 122  
A-3 REV. UNITS 103, 119, 120, 122

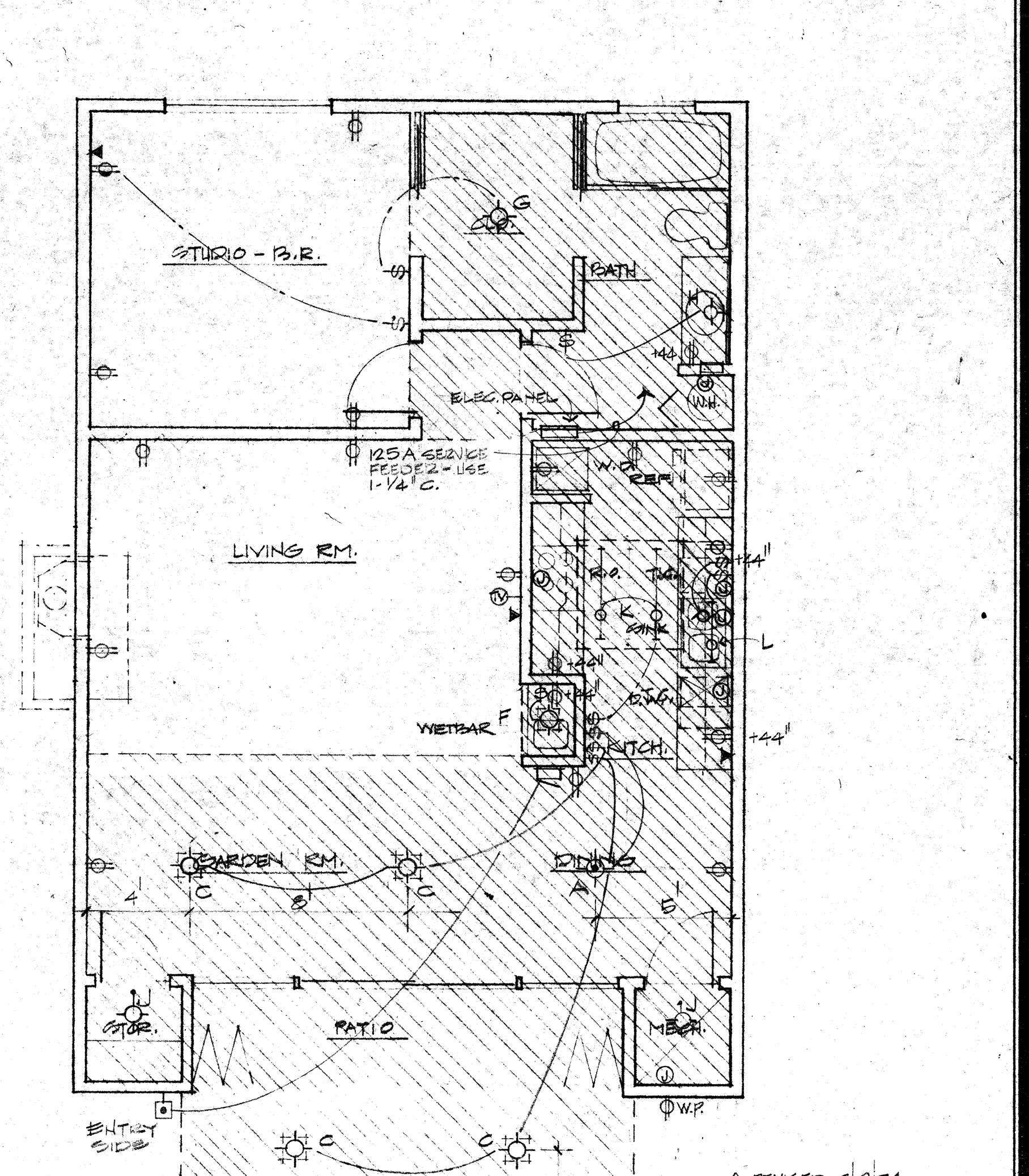


NOTES: REFER TO FLOOR PLAN A-1 FOR INTERPRETATION NOT SHOWN.

A-2B UNIT 210



A-2A UNIT 217



A-1 UNITS 105, 109, 110, 112  
A-1 REV. UNITS 106, 107, 108, 117

SAND CASTLE ATELS  
151 E. SHARPER DR., TEMPE, ARIZ.  
1213 E. PALM DR., PHX., ARIZ.

MODEL A-1 C  
ELECTRICAL FLOOR PLANS

SCHONBERGER STRAUB FLORENCE AND ASSOCIATES ARCHITECTS INCORPORATED  
THIRTY EIGHT FIFTEEN NORTH THIRD STREET PHOENIX, ARIZONA 85012 (602) 254-4125/254-0194  
REGISTERED ARCHITECTS IN ARIZONA, CALIFORNIA, ILLINOIS, INDIANA, IOWA, KANSAS, MISSOURI, NEBRASKA, NEVADA, NEW YORK, NORTH CAROLINA, SOUTH CAROLINA, TEXAS, VIRGINIA, WISCONSIN, WYOMING

DATE: 6/21/94  
DRAWN BY: JH  
CHECKED BY: JH  
PROJECT: 98551  
REVISIONS:  
REVISED 8/2/94

