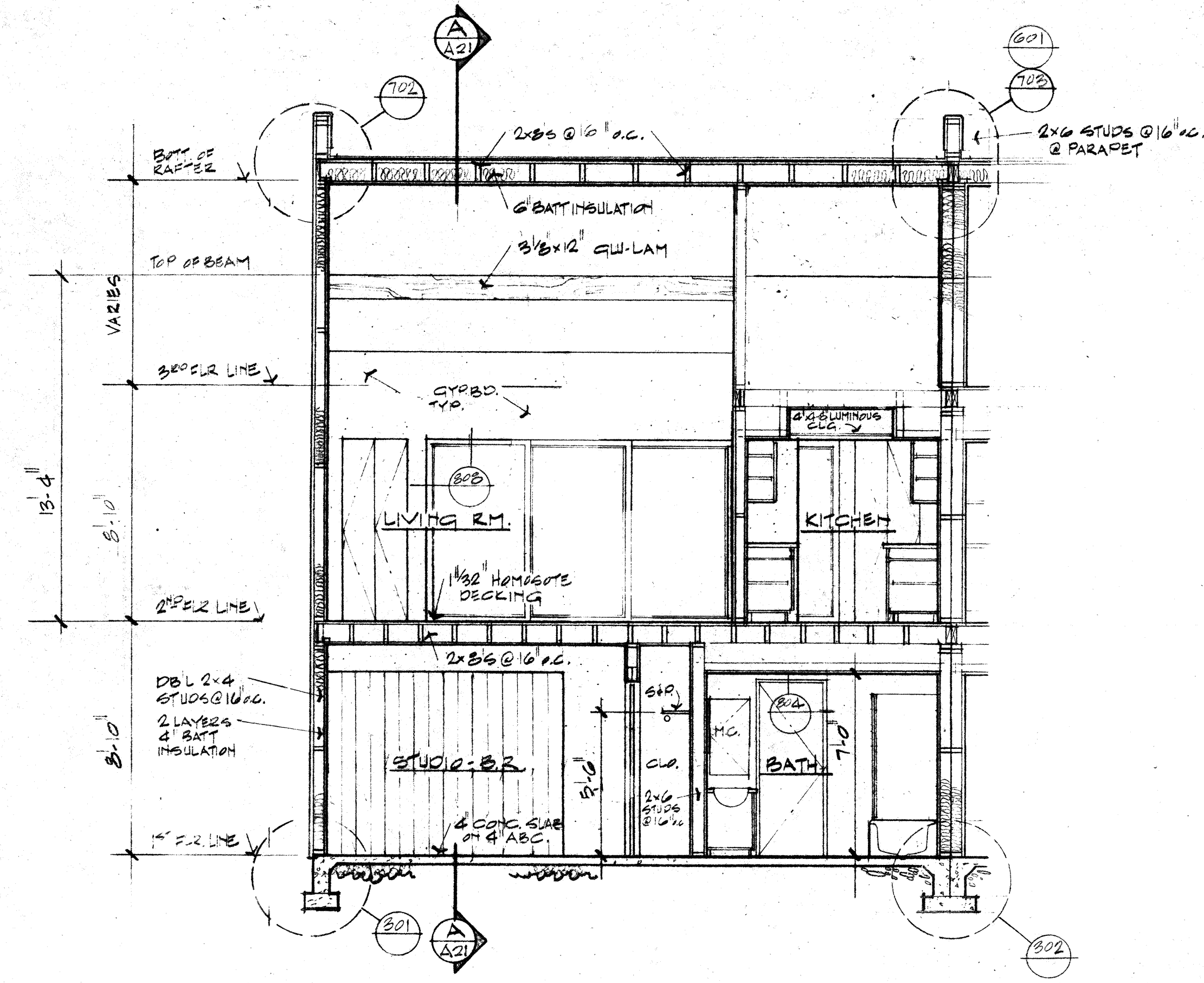
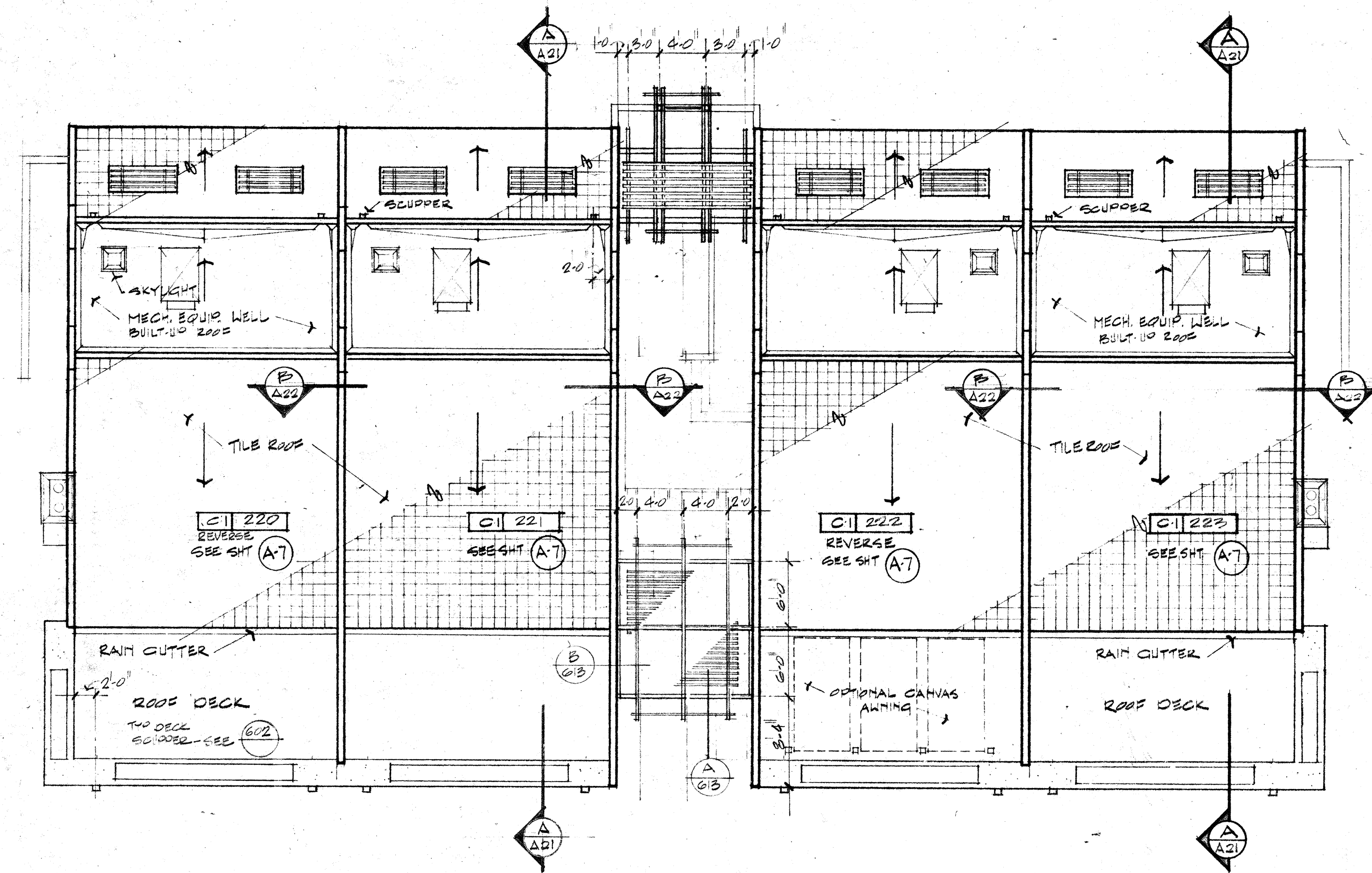


WEST ELEVATION - UNITS #122/222  
SCALE: 1/4"=1'-0"

EAST ELEVATION - UNITS #122/222  
SCALE: 1/4"=1'-0"



SECTION B  
SCALE: 1/4"=1'-0"



ROOF PLAN  
SCALE: 1/8"=1'-0"  
NORTH

BLDG #5

SAND CASTLE AT THE LAKES  
STAMAN, THOMAS AND COMPANY  
1191 E. SANDPIPER DR., TEMPE, ARIZ.  
1213 E. PALMICO DR., PHX., ARIZ.

SCHONBERGER STRUBAL, FLORENCE AND ASSOCIATES ARCHITECTS INCORPORATED  
THURSDAY, FEBRUARY 1985  
1000 N. CENTRAL AVENUE, SUITE 100, PHOENIX, ARIZONA 85012  
PHOENIX, ARIZONA (602) 254-4200  
MEMBER AMERICAN INSTITUTE OF ARCHITECTS

DATE: 6/27/84  
DRAWN: GSA  
CHECKED:  
PROJECT: 835-1  
REVISION:

A  
22