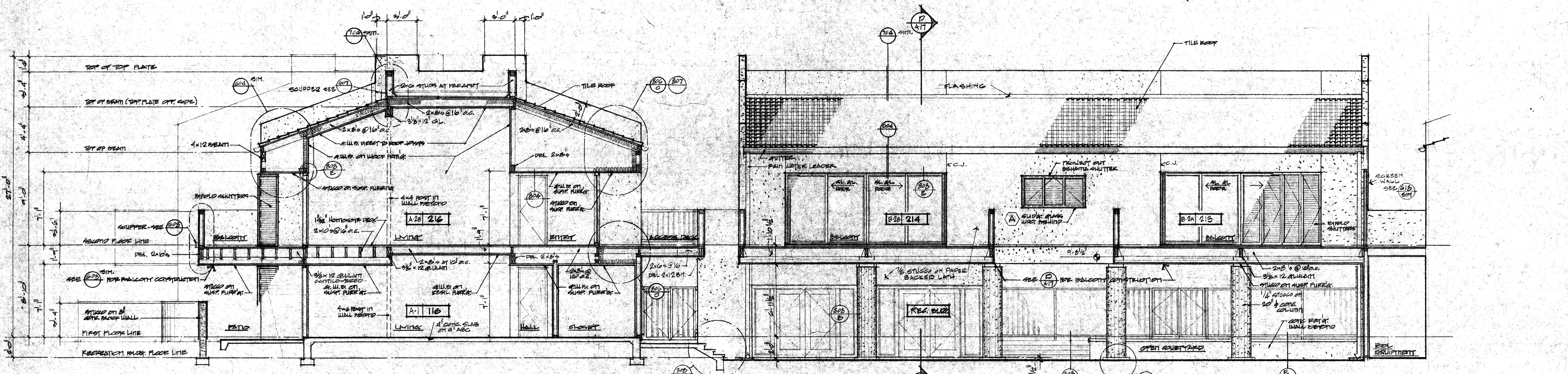
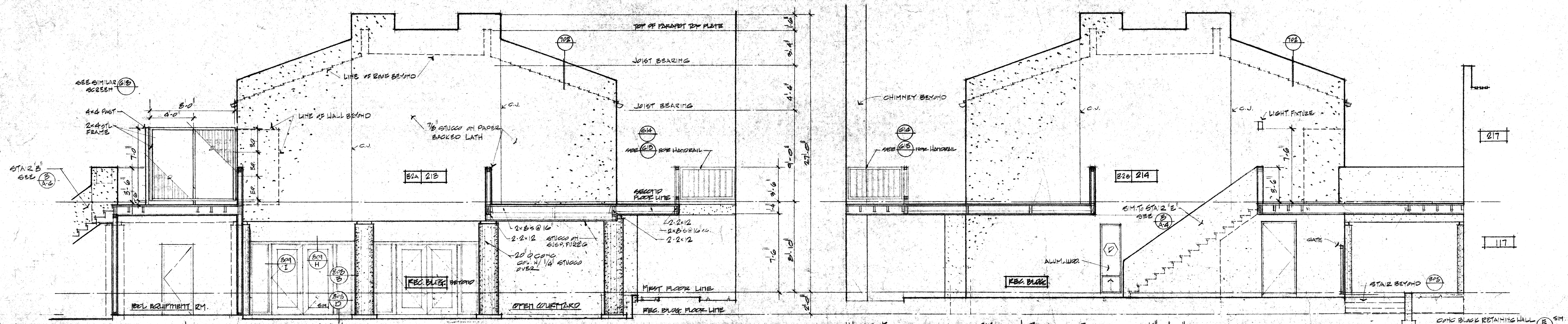


BUILDING SECTION 'D' 1/4" = 1'-0"

NORTH ELEVATION - UNITS 214, 215 & RECREATION BLDG. 1/4" = 1'-0"



BUILDING SECTION 'E' & SOUTH ELEVATION - UNITS 214, 215 & RECREATION BLDG. 1/4" = 1'-0"



EAST ELEVATION - UNITS 213 & RECREATION BLDG. 1/4" = 1'-0"

WEST ELEVATION - UNITS 214 & RECREATION BLDG. 1/4" = 1'-0"

**BLDG # 3**

**SAND CASTLE CARES**  
STAMAN, THOMAS AND COMPANY

187 E. SAPPAPER DR., TEMPE, ARIZ.  
1213 E. PALAZO DR., PHX., ARIZ.

**SCHONEBERGER STRAUB FLORENCE AND ASSOCIATES ARCHITECTS, INCORPORATED**  
STUDIO: 1000 N. CENTRAL AVENUE, SUITE 100, PHOENIX, ARIZONA 85012 (602) 248-1250/248-0194  
FACILITY: 1000 N. CENTRAL AVENUE, SUITE 100, PHOENIX, ARIZONA 85012 (602) 248-1250/248-0194

DATE: 02-20-76  
DRAWN BY: JZ  
CHECKED: [Signature]  
PROJECT: 7055-1  
SHEET: 17

**A 17**