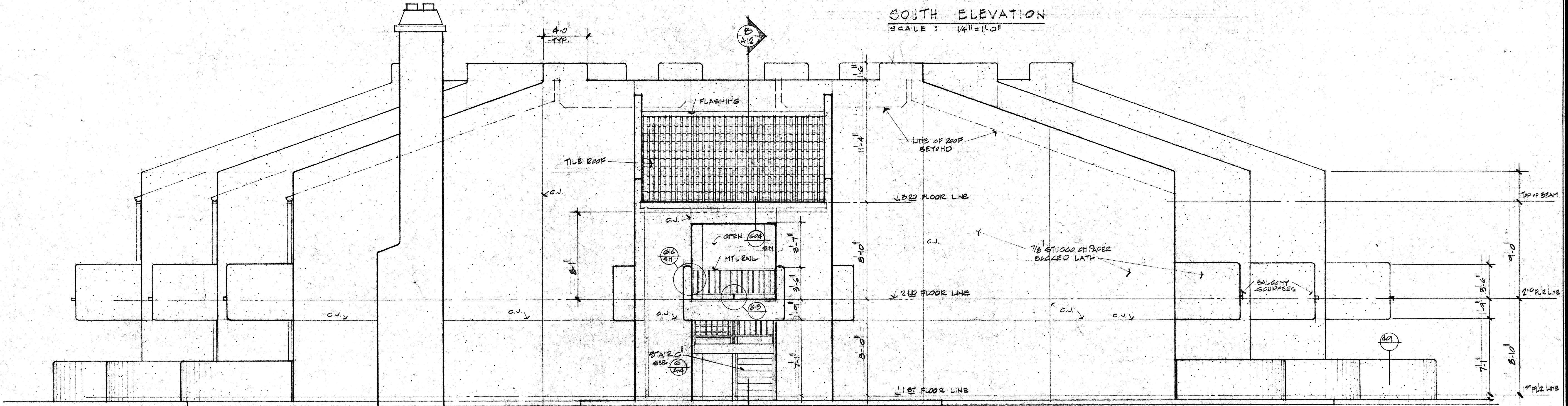
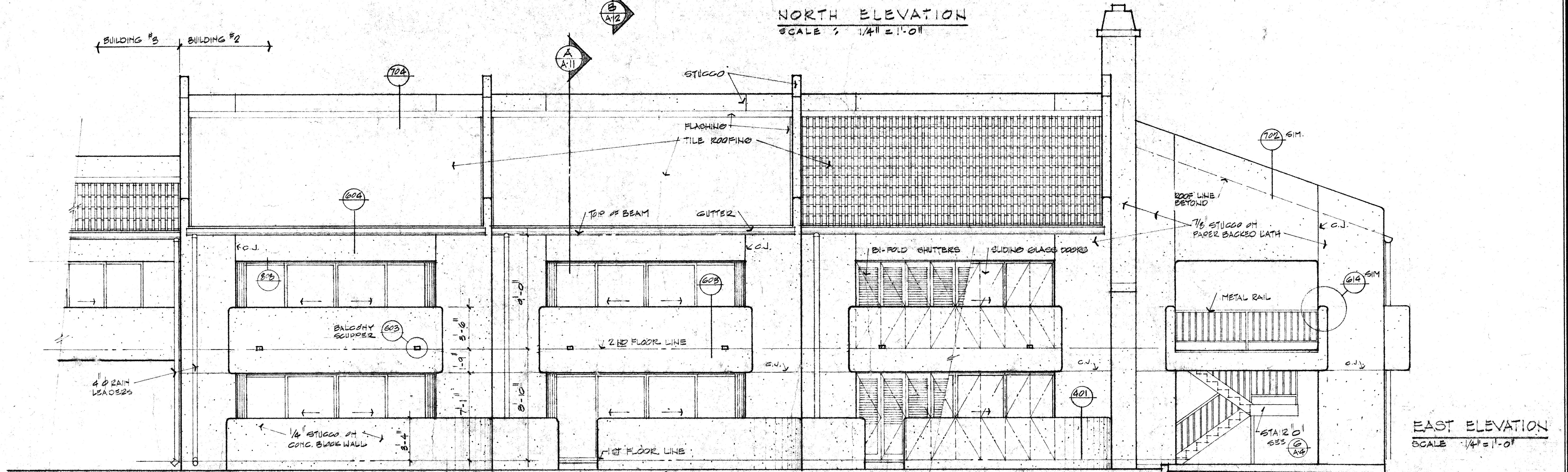


SOUTH ELEVATION
SCALE: 1/4" = 1'-0"



NORTH ELEVATION
SCALE: 1/4" = 1'-0"



EAST ELEVATION
SCALE: 1/4" = 1'-0"

SAND CASTLE CARES
 STAMAN, THOMAS AND COMPANY
 1131 E. SHARPER DR., TEMPE, ARIZ.
 1213 E. PALACIO DR., PHX., ARIZ.

BLDG #2

A 14

ARCHITECTS, INCORPORATED
 1001 NORTH CENTRAL AVENUE, SUITE 100, PHOENIX, ARIZONA 85012
 PHONE: 264-4125 FAX: 264-0194
 LICENSE NO. 123456789

DATE: 02/14/74
 DRAWN BY: CSM
 PROJECT: 7905-1
 SHEET: 14