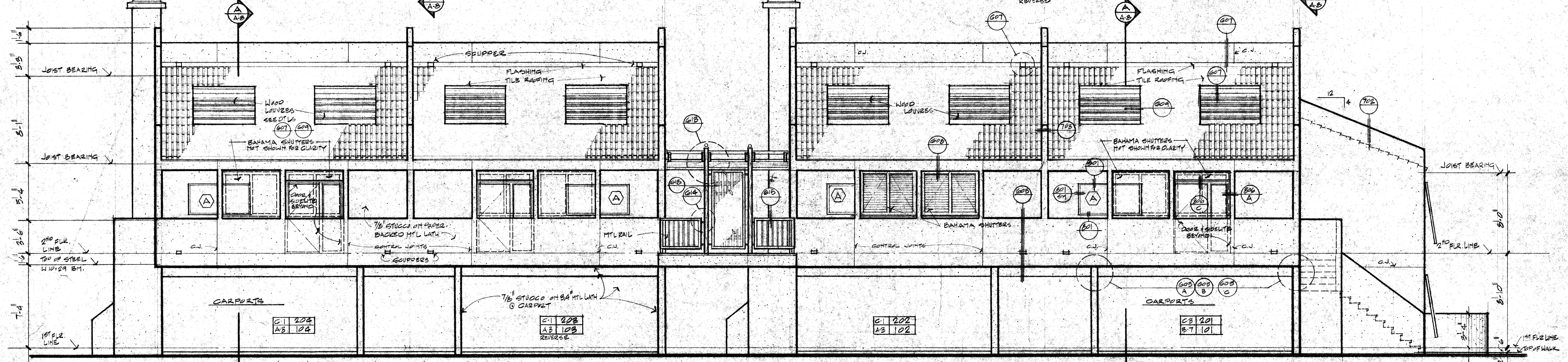
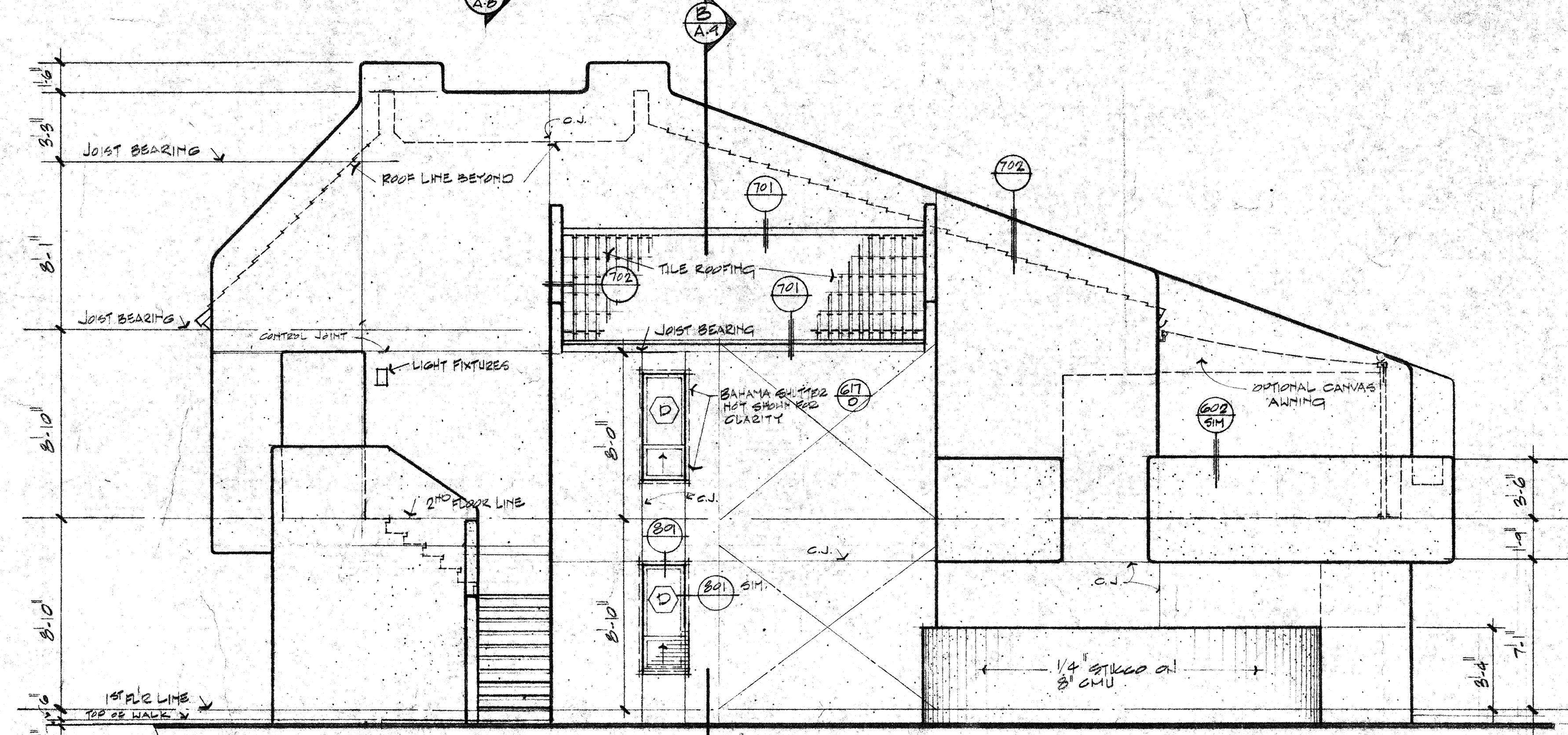


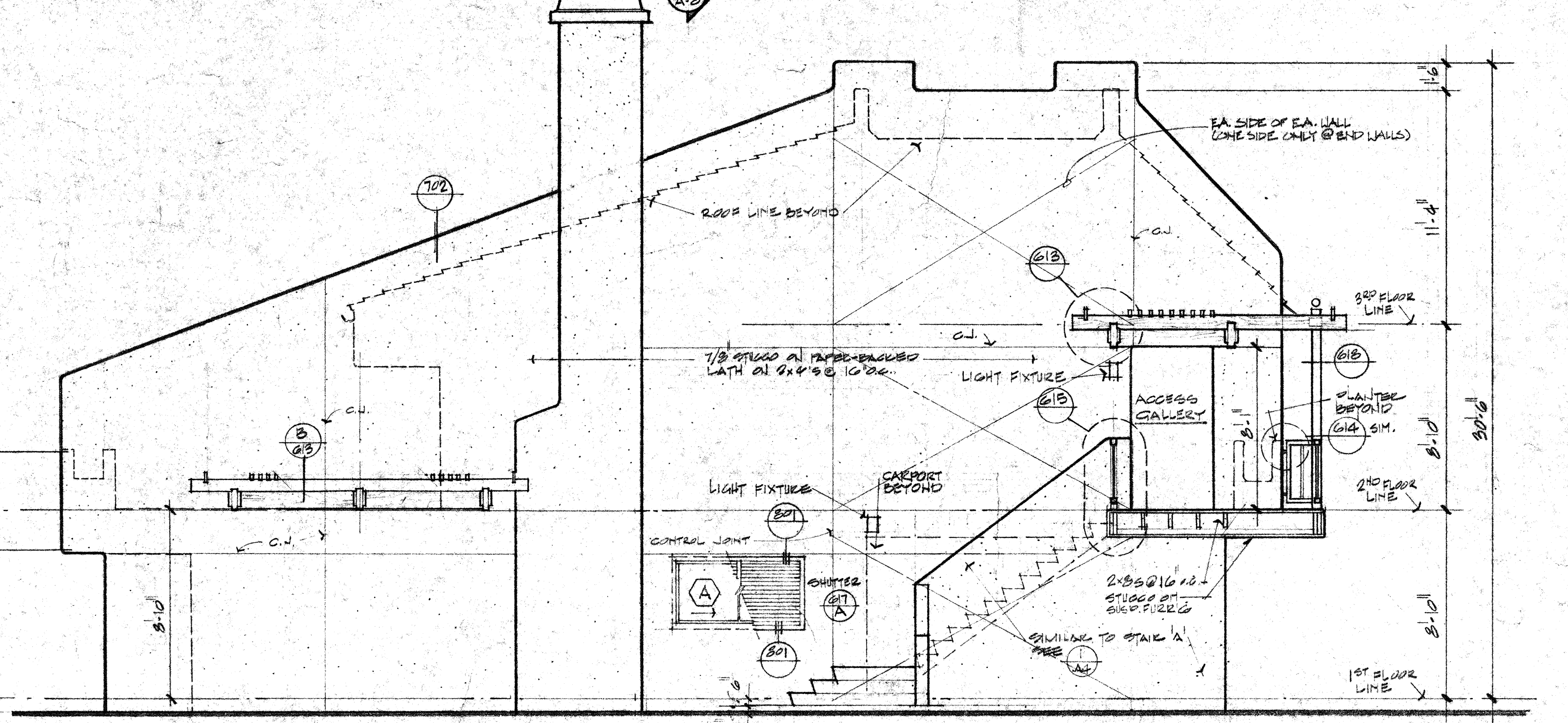
SOUTH ELEVATION - BLDG. #1
SCALE: 1/8"=1'-0"



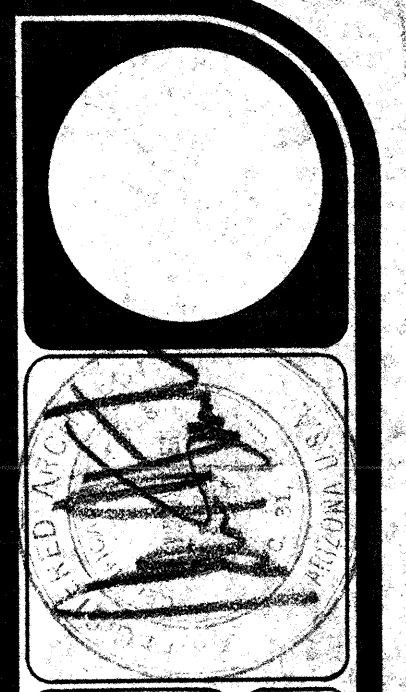
NORTH ELEVATION - BLDG. #1
SCALE: 1/8"=1'-0"



WEST ELEVATION - UNIT #101/201
SCALE: 1/4"=1'-0"



EAST ELEVATION - UNIT #102/202
SCALE: 1/4"=1'-0"



MEMBER
AMERICAN INSTITUTE OF ARCHITECTS

SAND CASTLE AXES
STAMAH, THOMAS AND COMPANY

1101 E. SANDRIFFER DR., TEMPE, ARIZ.
1215 E. BLAZO DR., PHX., ARIZ.

BLDG. #1

SCHONBERGER, STRAUB, FLORENCE AND ASSOCIATES ARCHITECTS, INCORPORATED
PHOENIX, ARIZONA, 85012 (602) 964-4125/245-0199
DANIEL STRAUB, ARCHITECT, PRINCIPAL; FLORENCE FLORENCE, ARCHITECT, PRINCIPAL; SANDY SCHONBERGER, ARCHITECT, PRINCIPAL; JAMES SCHONBERGER, ARCHITECT, PRINCIPAL

DATE: 02/24/74
DRAWN: DEB
CHECKED: JES
PROJECT: 1252-1
REVISION:

A 10