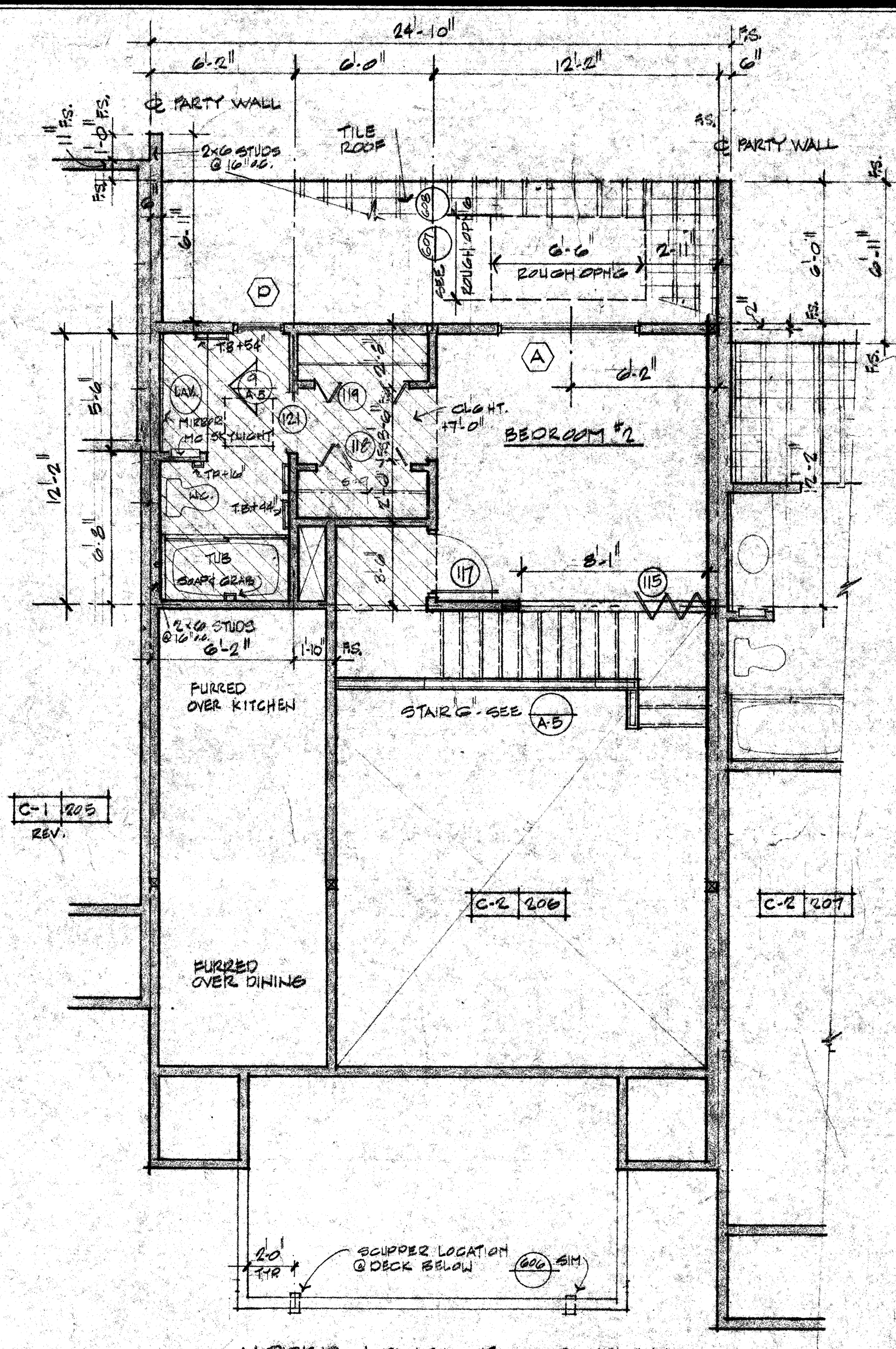
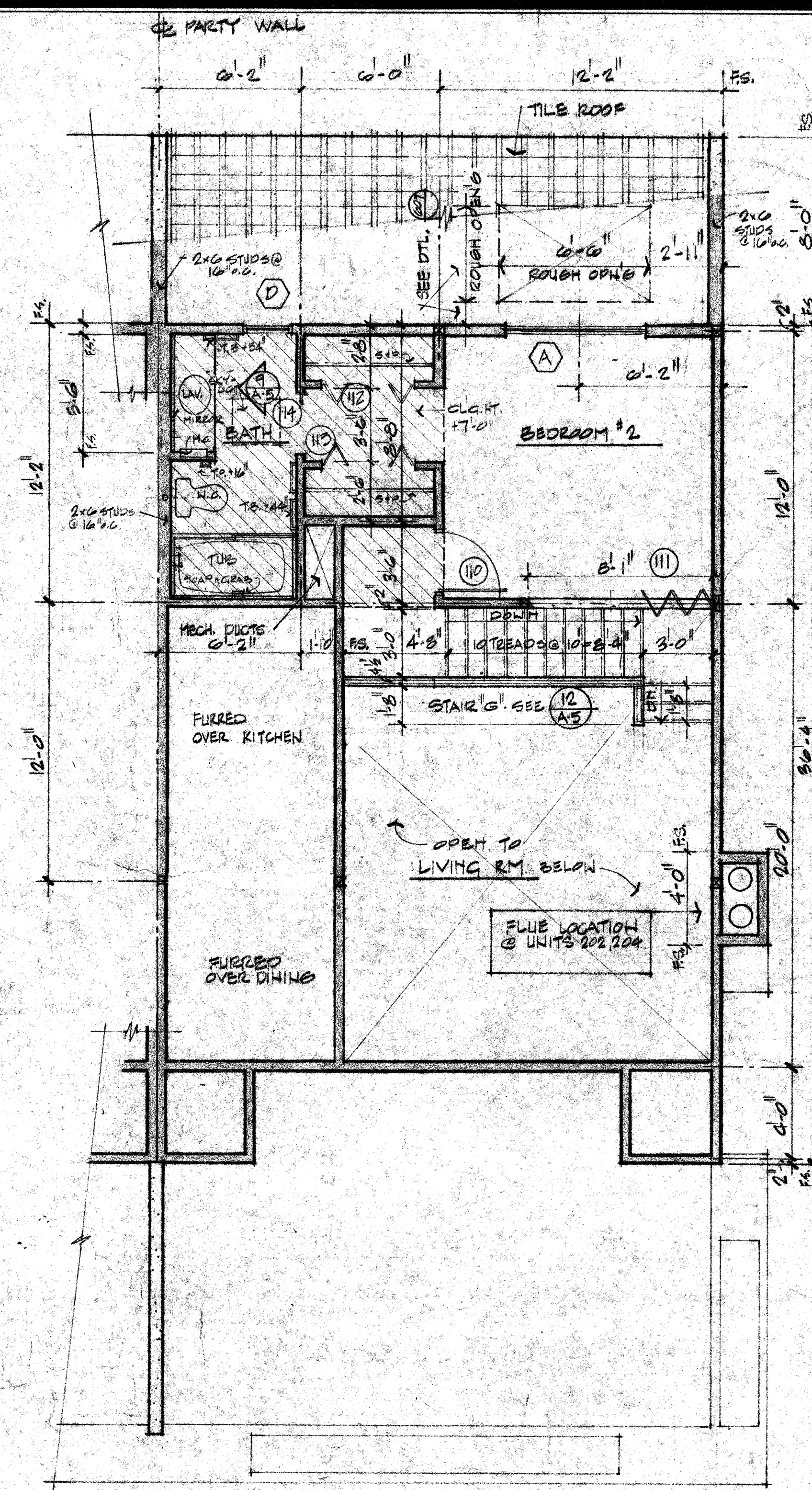


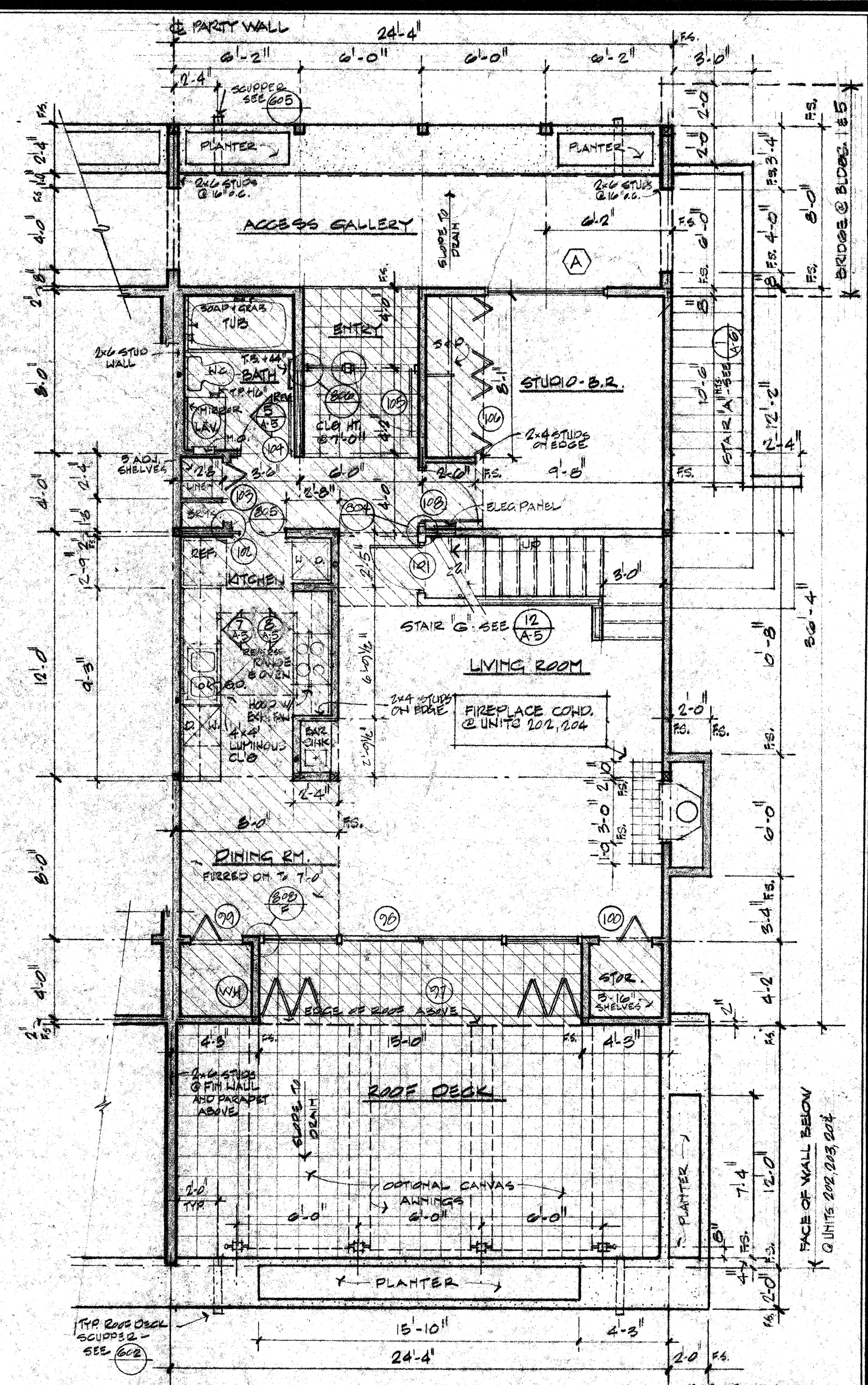
LOWER LEVEL PARTIAL FLR. PLAN  
 C-3 UNIT 201  
 SCALE: 1/4" = 1'-0"



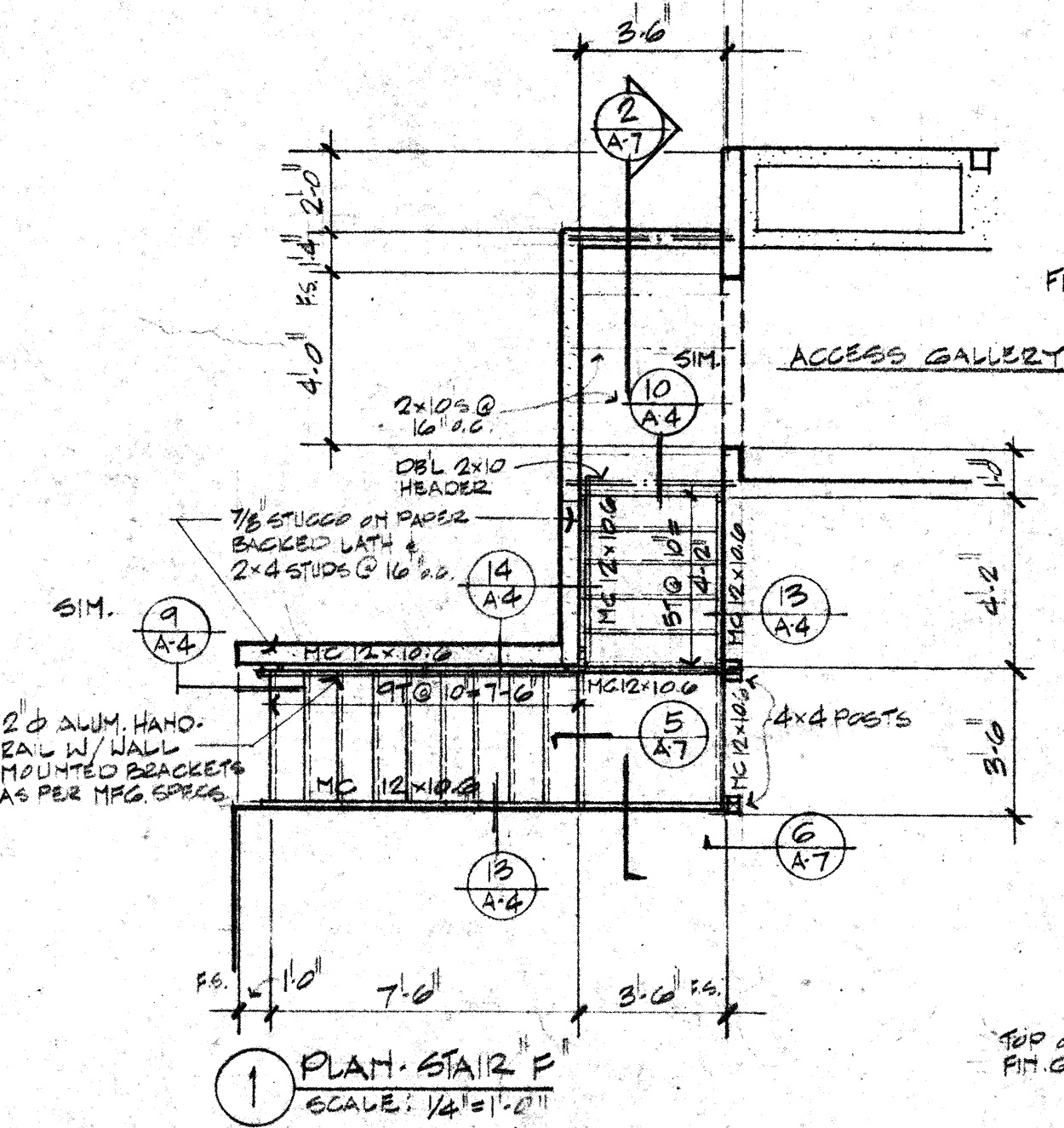
UPPER LEVEL FLOOR PLAN  
 C-2 UNITS 206, 207  
 C-2 REVERSE UNITS 209, 210  
 SCALE: 1/4" = 1'-0"



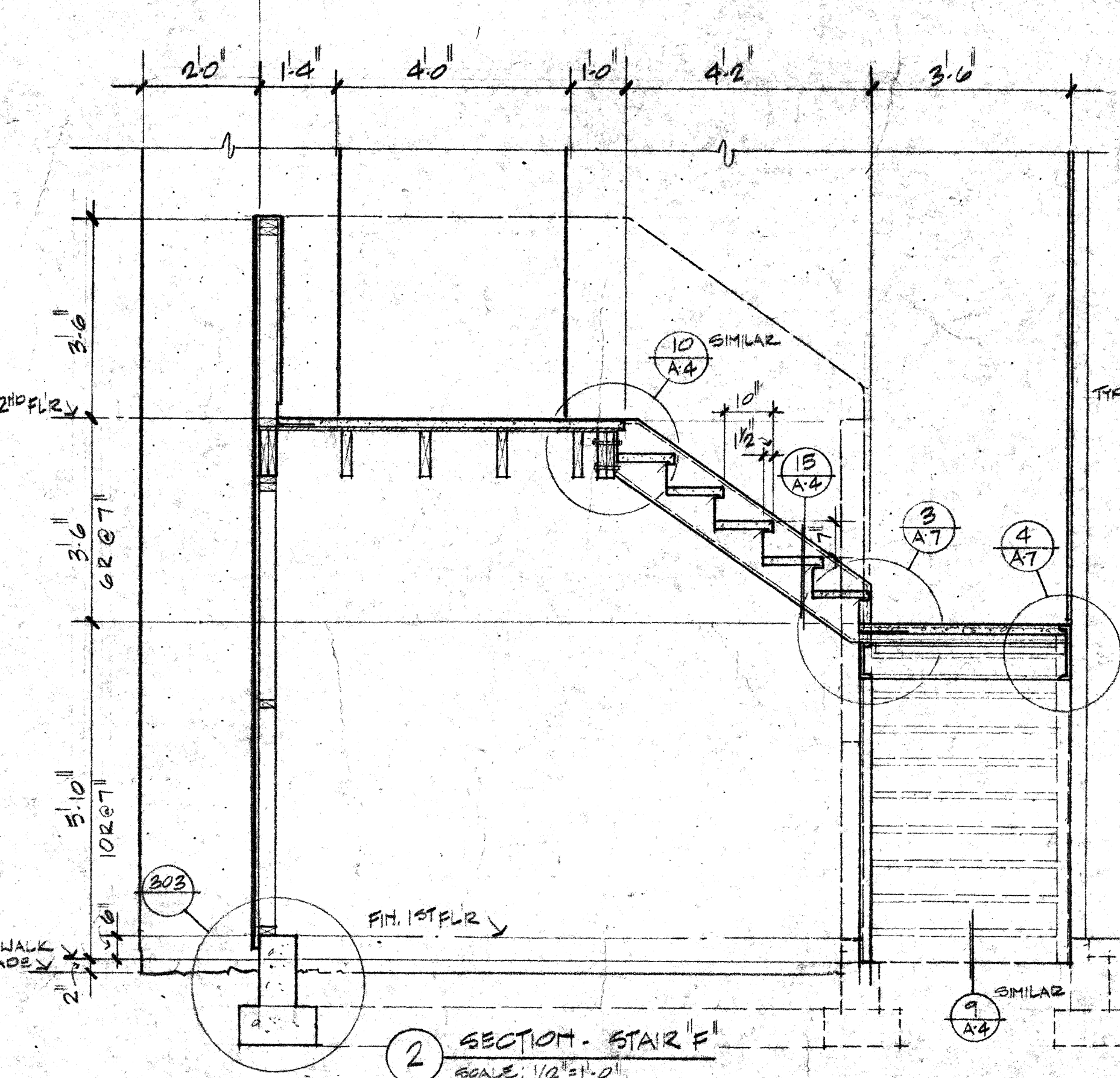
UPPER LEVEL FLOOR PLAN  
 C-1 UNITS 201, 202, 204, 205, 210, 221, 223  
 C-1 REVERSE UNITS 203, 203, 219, 220, 222  
 SCALE: 1/4" = 1'-0"



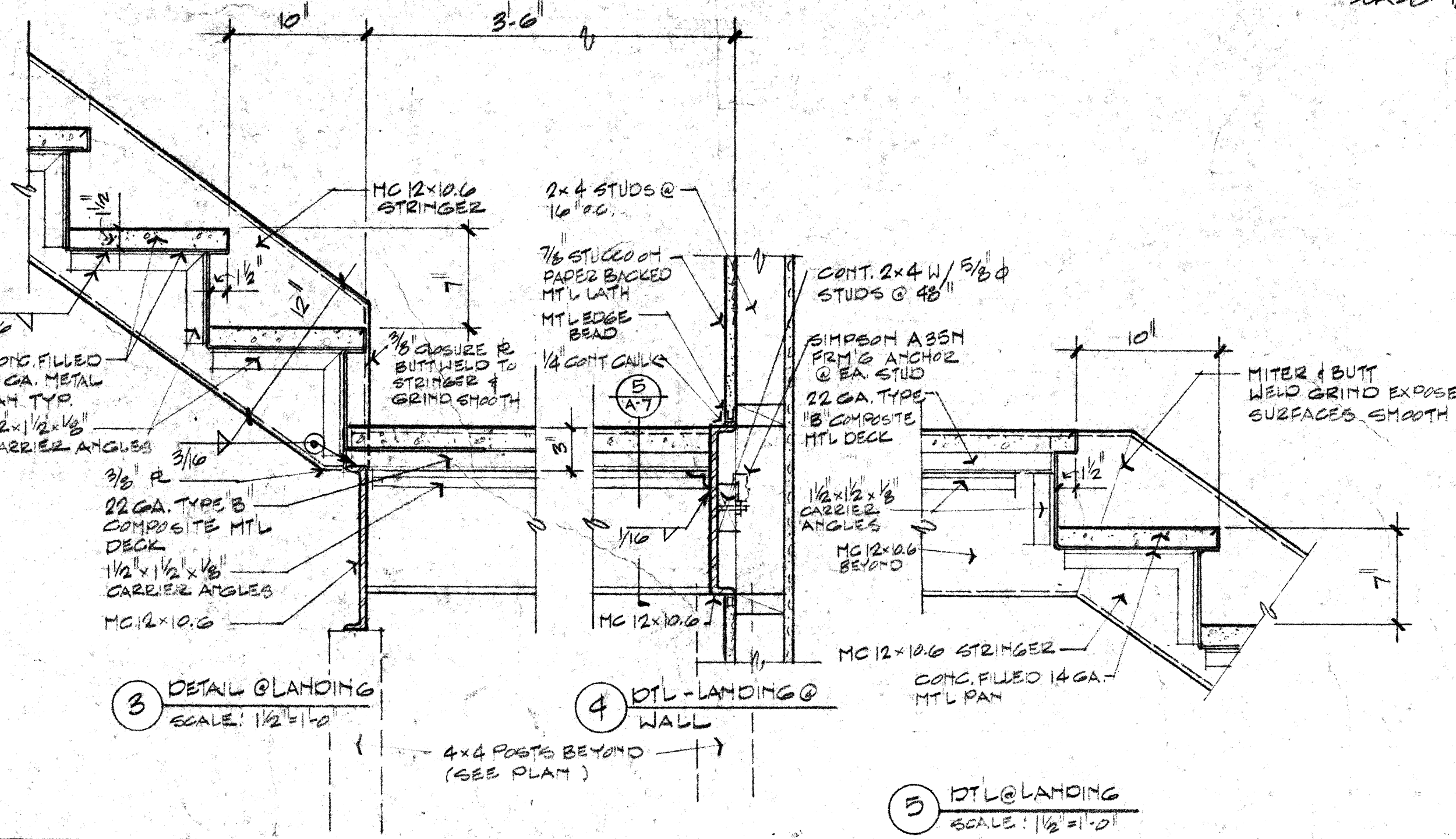
LOWER LEVEL FLOOR PLAN  
 C-1 UNITS 202, 204, 209, 207, 208, 210, 221, 223  
 C-1 REVERSE UNITS 203, 203, 219, 209, 210, 220, 222  
 NOTE: FOR BALCONY CONDITIONS & UNITS 205 THRU 210 REFER TO DETAIL (A) & (B)  
 SCALE: 1/4" = 1'-0"



1 PLAN STAIR F  
 SCALE: 1/2" = 1'-0"



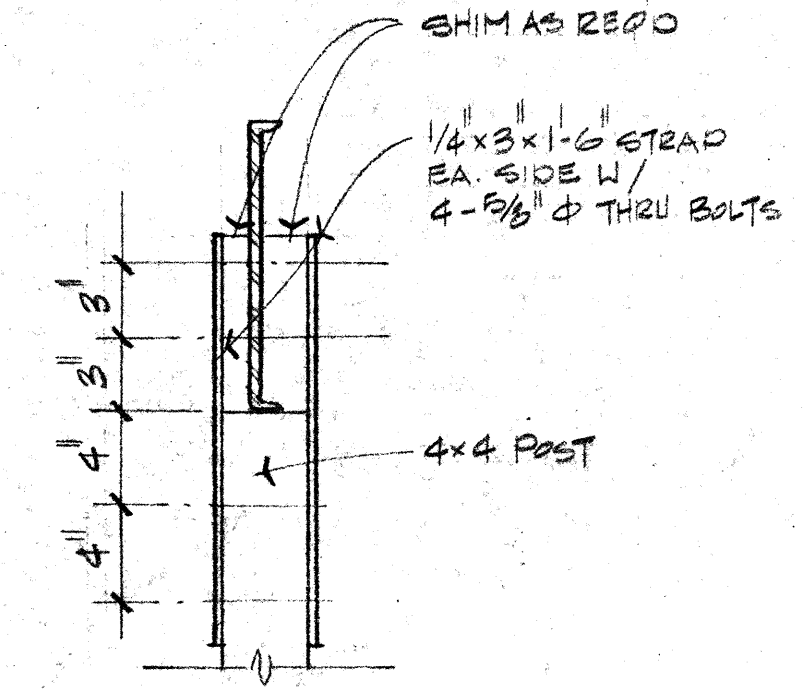
2 SECTION STAIR F  
 SCALE: 1/2" = 1'-0"



3 DETAIL LANDING  
 SCALE: 1/2" = 1'-0"

4 DTL LANDING @ WALL  
 SCALE: 1/2" = 1'-0"

5 DTL LANDING  
 SCALE: 1/2" = 1'-0"



6 DTL @ 4x4 POSTS  
 SCALE: 1/2" = 1'-0"

NOTE: REFER TO FLR. PLAN FOR TYPICAL NOTES AND DIMENSIONS NOT SHOWN

**SAND CASTLE LAKES**  
 STAMAH THOMAS AND COMPANY

191 E. SHAMPER DR., TEMPE, ARIZ.  
 1213 E. PALM DR., PHX., ARIZ.

**MODEL 2-BEDRM. FLR. PLANS**  
 TWO LEVELS

SCHONBERGER, STRAUB, FLORENCE AND ASSOCIATES ARCHITECTS INCORPORATED  
 THIRTY EIGHT FIFTH AVENUE NORTH PHOENIX ARIZONA 85012  
 (602) 264-4121 (244) 0191  
(REGISTERED ARCHITECTS IN ARIZONA, CALIFORNIA, ILLINOIS, INDIANA, IOWA, MISSOURI, NEBRASKA, NORTH CAROLINA, NORTH DAKOTA, SOUTH DAKOTA, TEXAS, VIRGINIA, WISCONSIN)

DATE: 6-25-74  
 DRAWING: CELL  
 CHECKED:  
 PROJECT: 7422-1  
 REVISION: